

# LUNDY

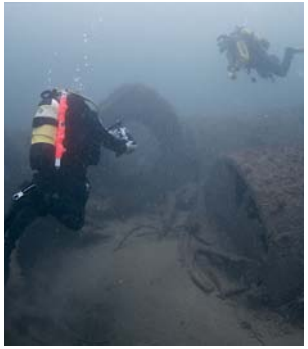
Marine Protected Area  
Code of Conduct  
and Zoning Scheme



The  
Landmark  
Trust



National  
Trust



## Respect, Protect, Enjoy!

The rules set by the Lundy Marine Protected Area (MPA) Zoning Scheme and No Take Zone **apply to everyone**. These are strictly enforced and much of this Code of Conduct is underpinned by law. This Code is for everyone who visits Lundy to ensure that the island's marine life and habitats are protected for future generations.



# Marine Code of Conduct

## General – for all visitors

- Do not disturb or remove any plant or animal within the Marine Protected Area (Marine Conservation Zone, Special Area of Conservation and Site of Scientific Interest).
- All extractive activities are prohibited within the No Take Zone (unless under the auspices of a scientific licence).
- Lundy is now a rat- and mouse-free island. To keep it that way please take ALL rubbish home with you – especially perishables, and check your boats and bags for rodents before arriving.
- Keep a distance of at least 100m from any hauled-out seals and/or nesting seabirds – this includes visitors enjoying wildlife on the island from the shore, as well as all vessels within the MPA (including kayaks and stand-up paddleboards).
- Report all interesting or unusual sightings of marine wildlife or any archaeological finds to the Warden.

If you happen to witness any infringements from this Code of Conduct and/or any instances of wildlife disturbance within the MPA, please contact the Warden on (01237) 431 831 or email: [warden@lundyisland.co.uk](mailto:warden@lundyisland.co.uk)

## Rockpooling

- Please try to leave everything as you find it, always return rocks and seaweed as they were as these provide shelter, food and homes for wildlife.
- Do not collect animals or plants in buckets or use nets.
- Surveys and scientific monitoring may require consent (consult with the Warden).

## Boating

- All kinds of craft from stand-up paddleboards through kayaks to charter boats are included.
- Keep to a distance of 100m from nesting seabird sites from 1st March to 1st August. Reduce speed to less than 5 knots when 100m from seabird cliffs and rafting birds.
- Keep to a distance of 100m from hauled-out seals (all year round). Reduce speed to less than 5 knots when 100m from seal haul-out areas (particularly at Brazen Ward, Three-quarter Wall Bay and Surf Point).
- Reduce speed to less than 5 knots when 100m from basking sharks, seals or cetaceans (whales, dolphins and porpoises). Do not change your course to directly approach them, let them come to you.
- Avoid anchoring if at all possible. If it is necessary, then anchor in less sensitive habitats such as sandy seabeds in the Landing Bay.
- Do not anchor or use shot lines within 100m of the Knoll Pins.
- Use the visitor moorings buoys as shown on the zoning scheme in Gannets' Bay, Brazen Ward and the Landing Bay.
- Do not deploy any mooring. A licence is required for permanent moorings and permission for a temporary mooring from the Warden.
- Use a WiSe accredited operator when chartering, see: [www.wisescheme.org](http://www.wisescheme.org)
- The speed limit within the Landing Bay (Recreational Zone) is 5 knots.

## Diving and snorkelling

- Control buoyancy to avoid contact with marine life and be aware of the environment around you especially when taking photographs.
- Try not to leave air bubbles in caves or overhangs.
- It is prohibited to remove crawfish (spiny lobsters) from the MPA.
- Spearfishing is not permitted anywhere within the MPA.
- Do not remove any items off any wrecks or any associated material on the seabed.
- The Gull Rock wreck and *Iona II* are designated Protected Wreck sites: diving these without a licence is illegal. The HMS *Montagu* wreck is a Scheduled Monument and may be dived without a licence.
- We do **NOT** encourage the taking of shellfish outside of the No Take Zone (NTZ).
- If shellfish are removed, a permit must be obtained from D&SIFCA before doing so.
- Follow the Seal Code of Conduct.

## Seal Code of Conduct

- If you observe any behaviour which might indicate stress, such as increased vocalisation, teeth bearing or rapid entry into the water, please move away and allow the seal to recover.
- Keep to a distance of 100m from hauled-out seals (all year round). Reduce speed to less than 5 knots when 100m from seal haul-out areas (particularly at Brazen Ward, Three-quarter Wall Bay and Surf Point), or when approaching dive sites close to rocks.
- Whilst snorkelling or diving, please refrain from touching or feeding the seals.
- Do not take toys into the water to play with the seals.
- Do not directly approach the seals on land or in the water or attempt to chase them; given time they will come to you if they want to.
- Take plenty of pictures and feel free to send these onto the Warden, but avoid using flash photography as this may scare the seals.

## Sea fishing

- All types of fishing are prohibited within the No Take Zone.
- The removal of crawfish (spiny lobster) is prohibited from within the whole MPA.
- Adhere to the MPA Zoning Scheme and management designated under D&SIFCA byelaws.
- Catch and release all fish if not going to be used.
- Release all wrasse species, tope, red band fish, bull huss and conger eels where they are caught.
- Use barbless hooks.
- Avoid use of a gaff.
- Fish above the reef when fishing in reef areas. Do not fish on the bottom to avoid entanglement.
- Only retain sufficient fish for personal consumption and return all unwanted catch to the sea unharmed.
- Do not collect any bait from the intertidal area. You can obtain sustainable bait in the island's general store.
- Fishing of any type is not permitted within the area of a designated wreck site.
- Follow the National Federation of Sea Anglers (NFSA) 'Conservation Code for Sea Anglers' and abide by the 'Recommended Retention Size Limits'.
- Do not place any pots in the Landing Bay: they will be removed.
- Record and report all interesting catches.

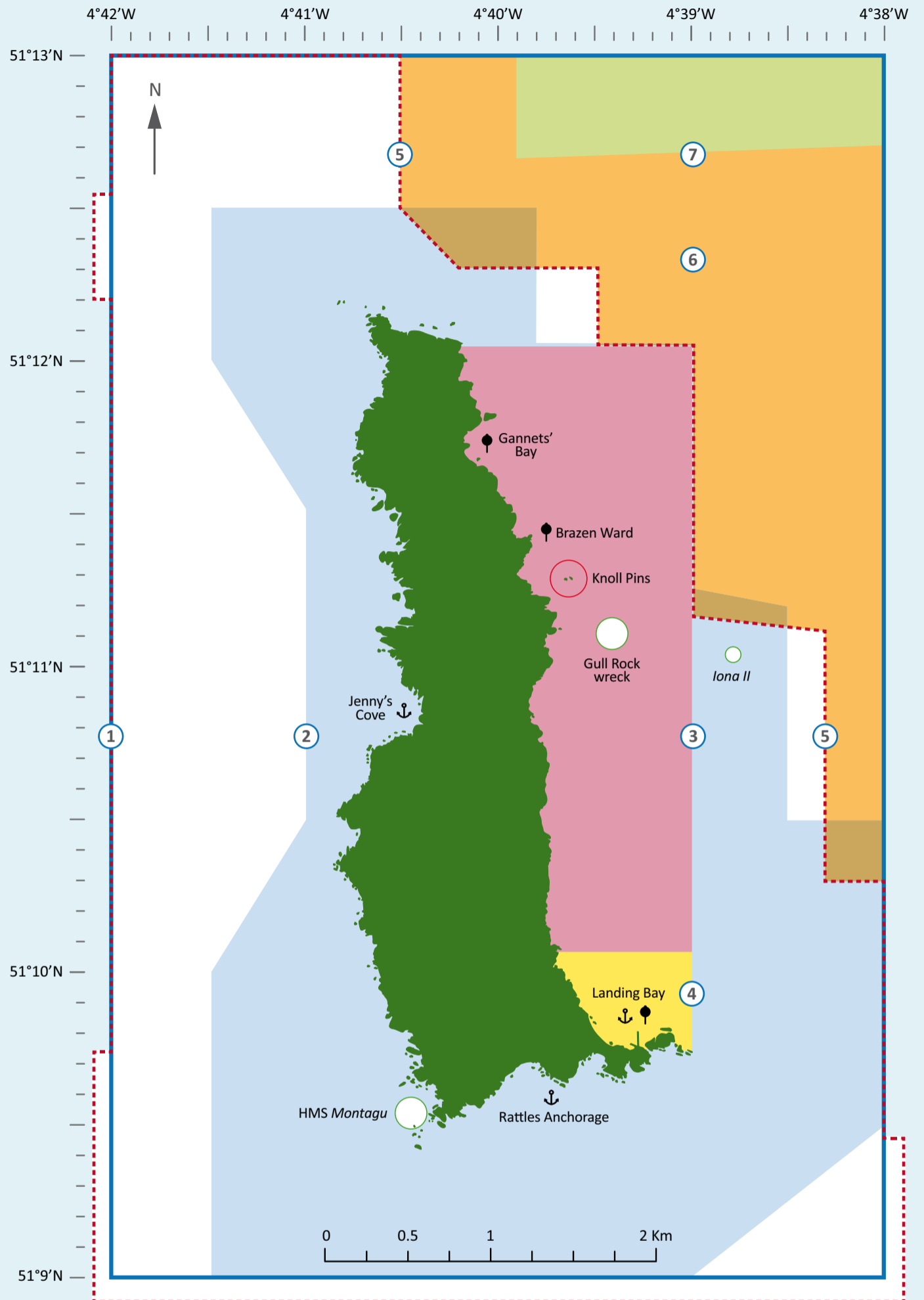
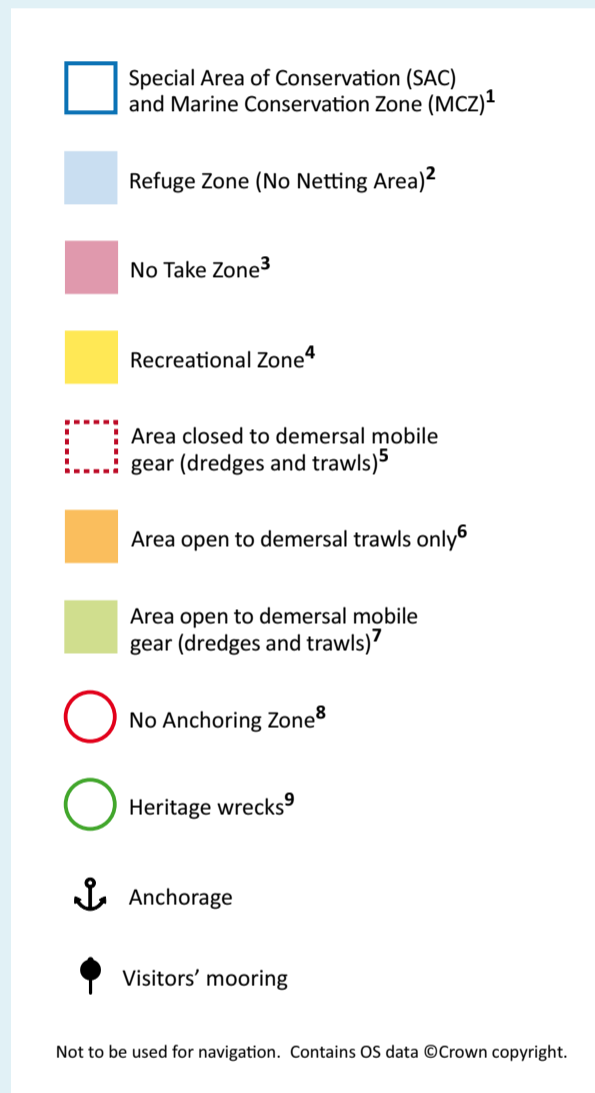
For further information on fisheries matters, please contact the Devon & Severn Inshore Fisheries and Conservation Authority on 01803 854648.

# Lundy Marine Protected Area Zoning Scheme

The Lundy Marine Protected Area (MPA) was established as a Marine Nature Reserve in 1986 to protect the remarkable diversity of marine habitats and wildlife which are present around the island.

The MPA is currently used by a variety of people undertaking various diverse activities.

This Zoning Scheme has been developed to enable everyone to enjoy the MPA whilst also protecting this special place.



The Lundy Marine Protected Area encompasses several separate designations, each of which is associated with different specific protections. Originally established as a Marine Nature Reserve in 1986 (under the Wildlife and Countryside Act 1981), the exact same MNR area became a Marine Conservation Zone in 2010 (under the Marine and Coastal Access Act 2009). In 2003, the No Take Zone was established under a Devon Sea Fisheries Committee (now the Devon and Severn Inshore Fisheries and Conservation Authority) byelaw. In 2005, the Marine Nature Reserve became a Special Area of Conservation under the European Habitats Directive (1992); and, in 2016, the whole MPA was included within the much larger Bristol Channel Approaches SAC – specifically designed to protect the harbour porpoise *Phocoena phocoena*. The foreshore around the island (to low water mark) is included with a Site of Special Scientific Interest designation (which includes much of the island) made in 1976.

Within the MPA, special protection is given to the following habitats: intertidal and subtidal reefs; shallow sediment seabeds; and submerged or partially submerged sea caves. The following species are also afforded special protection: short-beaked common dolphin *Delphinus delphis*; bottlenose dolphin *Tursiops truncatus*; Risso's dolphin *Grampus griseus*; harbour porpoise *Phocoena phocoena*; minke whale *Balaenoptera acutorostrata*; long-finned pilot whale *Globicephala melas*; grey seal *Halichoerus grypus*; basking shark *Cetorhinus maximus*; pink sea fan *Eunicella verrucosa*; and spiny lobster *Palinurus elephas*.

Spearfishing is prohibited by byelaw throughout the SAC and MCZ.

This Zoning Scheme is accompanied by a Code of Conduct, much of which is underpinned by law, to which all users of the MPA should adhere.

<sup>1</sup> Features and species protected within the SAC and the MCZ are described left.

<sup>2</sup> The No Netting Area is designated under D&SIFCA Netting Permit Byelaw (Annex 4).

<sup>3</sup> The No Take Zone was established to protect sensitive and slow-growing reef communities and to enhance our understanding of the effects of these zones and their role in wildlife management. All extractive activities are prohibited from within the No Take Zone (unless under the auspices of a scientific licence).

<sup>4</sup> This area, centred on the Landing Bay, is recognised as being an area where swimming, snorkelling and other water sports are likely to be taking place. Boat traffic should be aware.

<sup>5</sup> Area closed to demersal mobile gear (dredges and trawls) designated under D&SIFCA Mobile Fishing Permit Byelaw (Annex 1).

<sup>6</sup> Area open to demersal trawls only designated under D&SIFCA Mobile Fishing Permit Byelaw (Annex 1a).

<sup>7</sup> Area open to demersal mobile gear (dredges and trawls) designated under D&SIFCA Mobile Fishing Permit Byelaw (Annex 1b).

<sup>8</sup> A No Anchoring/No Shot Lines Zone extends for 100m around the Knoll Pins in order to protect the delicate marine life associated with these rock pinnacles.

<sup>9</sup> Lundy has three heritage wrecks. The *Iona II* and the Gull Rock wreck site were designated as Protected Wrecks in 1989. HMS *Montagu* was designated a Scheduled Monument in 2019. A licence is required to dive on a Protected Wreck, but not on a Scheduled Monument.



Lundy is owned by the National Trust and managed by the Landmark Trust. The two charities have worked together since 1969 to restore and protect all that is cherished and special about Lundy. Every day visit and every overnight stay helps to secure the future of the island and its landscape, buildings and wildlife. The Lundy Company Ltd was established by the Landmark Trust to run Lundy on a day-to-day basis.

Lundy's wealth of natural and man-made resources makes it a place of international significance. The island's diverse terrestrial and marine habitats are home to rare species of birds, insects, marine life and plants, as well as being an important site for archaeology. Lundy is beautiful, wild, rugged and unspoilt.

We want you to enjoy your visit safely so please ensure that you take care whilst walking as many of the island footpaths and tracks are uneven and unprotected. Children should be supervised at all times. Anyone requiring assistance or further advice should contact the Lundy Shore Office. Please note that pets are not permitted on Lundy.

## Lundy Warden

Lundy | Bristol Channel | North Devon | EX39 2LY

Tel: 01237 431831 | [warden@lundyisland.co.uk](mailto:warden@lundyisland.co.uk)

## The Landmark Trust

The Landmark Trust manages Lundy with the advice and support of the following partners:

